

Instructions for Use

JE (Japanese Encephalitis) IgM Capture ELISA



EIA-4505



96 wells



Distributed by:



**Please use only the valid version of the package insert provided with the kit.
Verwenden Sie nur die jeweils gültige, im Testkit enthaltene, Arbeitsanleitung.
Si prega di usare la versione valida dell'inserto del pacco a disposizione con il kit.
Por favor, se usa solo la version valida de la metodico técnico incluido aqui en el kit.**

Table of Contents / Inhaltsverzeichnis / Tabella die Contenuti / Tabla de Contenidos

1	INTENDED USE.....	2
2	SUMMARY AND EXPLANATION OF THE TEST	2
3	PRINCIPLE OF THE TEST	2
4	MATERIALS SUPPLIED	3
5	TECHNICAL PRECAUTIONS.....	4
6	SPECIMEN COLLECTION AND PREPARATION.....	5
7	TEST PROCEDURE	5
8	QUALITY CONTROL	9
9	CALCULATIONS FOR UNKNOWN SAMPLE ANALYSIS	10
10	LIMITATIONS.....	10
11	PERFORMANCE CHARACTERISTICS	11
12	REFERENCES / LITERATURE	11
13	TROUBLESHOOTING	12
	SYMBOLS USED.....	13

1 INTENDED USE

The JE (Japanese Encephalitis) IgM Capture ELISA test for exposure to Japanese Encephalitis Virus (JEV) is an ELISA assay system for the detection of IgM antibodies in human serum to JEV-derived recombinant antigen (JERA) (1-4).

This test is to aid in the diagnosis of human exposure to the Japanese Encephalitis Virus (JEV).

It is not intended to screen blood or blood components, and is for professional in vitro diagnostic use only. This kit has not been optimized for vaccine induced seroconversion studies.

Not for sale or distribution in the United States of America.

2 SUMMARY AND EXPLANATION OF THE TEST

Exposure to JEV causes a disease with a number of symptoms including encephalitis (5-8). JE (Japanese Encephalitis) IgM Capture ELISA employs a recombinant antigen called JERA, which can be used as a rapid serological marker for JEV infection. The JERA protein is a recombinant antigen, which consists of a stretch of peptides from different parts of the JEV.

3 PRINCIPLE OF THE TEST

The JE (Japanese Encephalitis) IgM Capture ELISA consists of one enzymatically amplified "two-step" sandwich-type immunoassay.

In this assay, JE Negative Control (represents non-reactive serum), JE IgM Positive Control (represents reactive serum), and unknown serum samples are diluted with Sample Dilution Buffer, then incubated in microtitration wells which have been coated with anti-human IgM antibodies. This is followed by incubation with both JEV-derived recombinant antigen (JERA) and Normal Cell Antigen (NCA) separately. After incubation and washing, the wells are treated with a JERA-specific antibody labeled with the enzyme horseradish peroxidase (HRP). After a third incubation and washing step, the wells are incubated with the tetramethylbenzidine (TMB) substrate.

An acidic stopping solution is then added and the degree of enzymatic turnover of the substrate is determined by absorbance measurement at 450 nanometers. Above a certain threshold, the ratio of the absorbencies of the JERA and the control wells accurately determines whether antibodies to JEV are present.

4 MATERIALS SUPPLIED

Warning: Do not use any reagents where damage to the packaging has occurred.

The JE (Japanese Encephalitis) IgM Capture ELISA kit contains sufficient reagents for one plate of 96 wells (12 x 8 strips) each.

The kit contains the following reagents:

1. **Coated Microtiter Strips for Human IgM:**

Strip holder in foil pouch, containing 96 polystyrene microtiter wells coated with antibody to human IgM in each well.

Store at 2 °C - 8 °C until ready to use.

The anti-human IgM coated wells are used to capture IgM antibodies from human samples.

2. **Sample Dilution Buffer for IgM Type A:**

One bottle, 25 mL,

for serum dilution prior to use in assay.

Store at 2 °C - 8 °C until ready to use.

Note: *If any precipitate is seen, vortex the tube very well to obtain a homogeneous solution before use.*

3. **JE Negative Control:**

One vial, 50 µL.

The JE Negative Control will aid in monitoring the integrity of the kit.

Store at 2 °C - 8 °C until ready to use.

Quick spin the vial briefly before use to collect the content at the bottom.

4. **JE IgM Positive Control:**

One vial, 50 µL.

The JE IgM Positive Control will aid in monitoring the integrity of the kit.

Store at 2 °C - 8 °C until ready to use.

Quick spin the vial briefly before use to collect the content at the bottom.

5. **Ready to Use JE Antigen (JERA) for IgM:**

One bottle, 5 mL of a pre-diluted JERA solution.

Store at 2 °C - 8 °C until ready to use.

6. **Ready to Use normal cell antigen (NCA) for JE IgM:**

One bottle, 5 mL of a pre-diluted NCA solution.

Store at 2 °C - 8 °C until ready to use.

7. **Ready to Use Enzyme Conjugate-HRP for JE IgM:**

One bottle, 9 mL of a pre-diluted HRP conjugated flavivirus reactive monoclonal antibody (mAb).

Store at 2 °C - 8 °C until ready to use.

Note: The conjugate should be kept in a light-protected bottle at all times as provided.

8. **10X Wash Buffer:**

One bottle, 120 mL of Wash Buffer to be used in all the washing steps of this procedure.

Store at 2 °C - 8 °C until ready to use.

9. **ErWash:**

One bottle, 20 mL of ErWash to be used in between the washing steps after the addition of enzyme conjugate-HRP of this procedure.

Store at 2 °C - 8 °C until ready to use.

10. **Liquid TMB Substrate:**

One bottle, 12 mL of liquid substrate.

Store at 2 °C - 8 °C until ready to use.

Note: The substrate should be kept in a light -protected bottle at all times as provided.

11. **Stop Solution:**

One bottle, 9 mL to be used to stop the reaction.

Store at 2 °C - 8 °C until ready to use.

Caution: strong acid, wear protective gloves, mask and safety glasses. Dispose of all materials according to safety rules and regulations.

4.1 Materials Required But Not Supplied

- ELISA Spectrophotometer capable of absorbance measurement at 450 nm
- Biological or High-Grade Water
- Vacuum Pump
- Plate Washer
- 37 °C (±2 °C) Incubator
- 1-10 µL Single-Channel Pipettors, 50-200 µL Single-and Multi-Channel Pipettors
- Polypropylene tubes
- Parafilm or similar plate cover
- Timer
- Vortex

5 TECHNICAL PRECAUTIONS

BEFORE STARTING:

- A thorough understanding of this package insert is necessary for successful use of the product. Reliable results will only be obtained by using precise laboratory techniques and accurately following the package insert.
- Do not use any component beyond the kit's expiration date.
- Wear protective clothing, eye protection and disposable gloves while performing the assay. Wash hands thoroughly afterwards.
- Avoid exposure of the reagents to excessive heat or direct sunlight during storage and incubation.
- Some reagents may form a slight precipitate, mix gently before use.
- Avoid repeated freezing and thawing of the serum specimens to be evaluated.
- This test must be performed on freshly diluted serum only. The use of whole blood, plasma or other specimen matrix has not been validated. Do not store serum diluted in sample dilution buffer.
- Do not mix various lots of any kit component within an individual assay.
- Treat all sera as infectious material.
- **Do not heat-inactivate test sera.**
- All reagents must be equilibrated to room temperature (20 °C - 25 °C) before commencing the assay. The assay will be affected by temperature changes.
- Cover working area with disposable absorbent paper.

DURING THE ASSAY:

- Unused microwells must be resealed immediately and stored in the presence of desiccant. Failure to do so may cause erroneous results with those unused microwells.
- During dilution of the controls and test sera in sample dilution buffer it is critical that a **new pipette tip** be used for each sample to avoid cross contamination.
- All reagents are susceptible to contamination, thus, it is advisable to dispense reagents directly from bottles using clean pipettes or by carefully pouring. Pipettes should be used **only once** to avoid contamination of the components.
- Incomplete washing will adversely affect the outcome and assay performance.
- To minimize potential assay drift due to variation in the substrate incubation time, care should be taken to add the stop solution into the wells in the same order and speed used to add the TMB solution.
- Avoid microbial contamination of reagents, especially for the Ready to Use Enzyme Conjugate HRP for JE IgM.
- Avoid contamination of the TMB Substrate Solution with the Enzyme Conjugate-HRP. The TMB substrate is clear, if it appears *blue*, do not use as it may be contaminated.
- NIST-traceable standards should be used to calibrate the thermometers used to monitor the temperature of the incubator. It is important that the incubator is set at the right temperature.

WARNING: POTENTIAL BIOHAZARDOUS MATERIAL

All human source materials used in the preparation of controls have been heat-inactivated and have tested negative for antibodies to HIV 1&2, Hepatitis C and Hepatitis B surface antigen. However, no test method can ensure 100% efficiency, therefore, all human controls and antigen should be handled as potentially infectious material. The Centers for Disease Control and Prevention and the National Institutes of Health recommends that potentially infectious agents be handled at the Biosafety Level 2.

CHEMICAL HAZARD:

Safety Data Sheets (SDS) are available for all components of this kit. Review all appropriate SDS before performing this assay. Avoid all contact between hands and eyes or mucous membranes during testing. If contact does occur, consult the applicable SDS for appropriate treatment.

6 SPECIMEN COLLECTION AND PREPARATION

- Human serum must be used with this assay. Whole blood or plasma cannot be tested directly.
Note: CSF can be used. However, our kit has not been tested or optimized with CSF. Before using this kit, one has to optimize the CSF system.
- Remove serum from the clot of red cells as soon as possible to avoid hemolysis.
- Testing should be performed as soon as possible after collection. Do not leave sera at room temperature for prolonged periods.
- Serum should be used and the usual precautions for venipuncture should be observed. The samples may be stored at 2 °C - 8 °C for up to 7 days. To maintain long-term longevity of the serum, store at -20 °C or lower. Avoid repeated freezing and thawing of samples.
- Frozen samples should be thawed to room temperature and mixed thoroughly by gentle swirling or inversion prior to use. Always quick spin before use.
- If sera are to be shipped, they should be packed in compliance with Federal Regulations covering transportation of infectious agents.
- Do not use sera if any indication of growth is observed.

7 TEST PROCEDURE

Bring all kit reagents and specimens **to room temperature (20 °C - 25 °C) before use**. Thoroughly mix the reagents and samples before use by gentle inversion.

Before starting:

- ***Do not use any reagents where damage to the packaging has occurred.***
- ***Controls (*) must be centrifuged for 10 seconds at high speed prior to opening the vial to avoid loss of contents.***

Note: All serum, including the experimental, cannot be repeatedly thawed and frozen. For long-term storage, sera should be further aliquoted in a smaller volume and stored at -20 °C or lower. Always quick spin serum sample contained in vials or tubes to collect sample at the bottom.

This kit has not been optimized for use with any particular automated ELISA processing system. Use with an automated ELISA processing system will require proper validation to ensure results are equivalent to the expectations described in this package insert. Modifications to the protocol of these systems and/or different volumes of reagents may be required.

7.1 Preparation of Reagents**Preparation of 1X Wash Buffer:**

Dilute the 10X Wash Buffer to 1X using Biological or High-Grade Water.

To prepare a 1X wash buffer solution, mix 120 mL 10X wash buffer with 1080 mL high grade water and rinse out any crystals. Swirl until well mixed and all crystals are dissolved.

After diluting to 1X, store at room temperature for up to 6 months. Check for contamination prior to use.

Microtitration Wells:

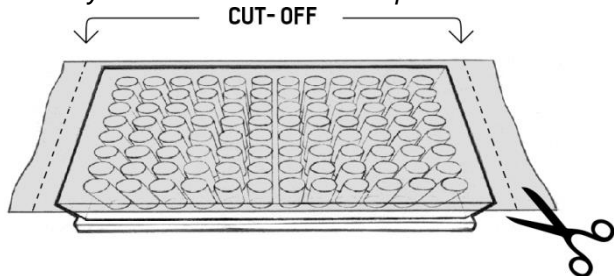
Select the number of coated wells required for the assay. The remaining unused wells should be placed back quickly into the pouch and stored at 2 °C - 8 °C until ready to use or expiration.

7.2 Assay Procedure

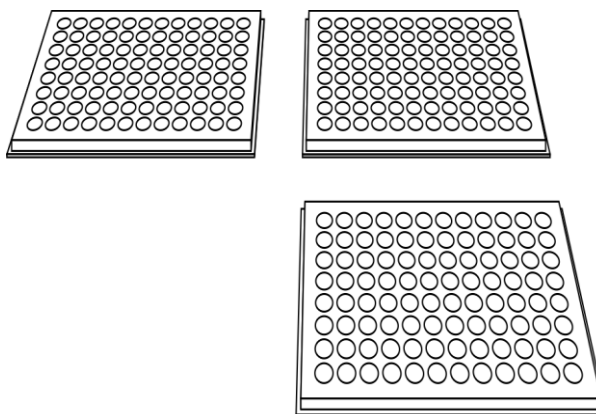
1. Positive and negative controls should be assayed in duplicate for both JERA and NCA portions of assay. Unknown serum samples to be tested can be assayed singly or in duplicate but must be assayed for both JERA and NCA portions of assay. Refer to flow chart at the end of this section for illustration of this procedure. Up to forty-four test specimens can be tested on one 96-well plate.
2. Mark the microtitration strips to be used.
3. **Dilute** test sera, and controls to **1/100** using the provided Sample Dilution Buffer. Use small polypropylene tubes for these dilutions and at least 4 µL of sera and positive and negative controls. For example:
4 µL serum plus 396 µL of Sample Dilution Buffer to make 1/100 dilution.
4. Apply the **50 µL/well** of 1/100 diluted test sera, JE Negative Control, and JE IgM Positive Control to the plate by single or multi-channel pipettor as appropriate. An exemplary arrangement is shown below.

Example for Serum Sample Application												
	1	2	3	4	5	6	7	8	9	10	11	12
A	JE Negative Control.	S#1	S#3	S#5	S#7	S#9	S#11	S#13	S#15	S#17	S#19	S#21
B	JE Negative Control.	S#2	S#4	S#6	S#8	S#10	S#12	S#14	S#16	S#18	S#20	S#22
C	JE IgM Positive Control.	S#23	S#25	S#27	S#29	S#31	S#33	S#35	S#37	S#39	S#41	S#43
D	JE IgM Positive Control.	S#24	S#26	S#28	S#30	S#32	S#34	S#36	S#38	S#40	S#42	S#44
E	JE IgM Positive Control.	S#24	S#26	S#28	S#30	S#32	S#34	S#36	S#38	S#40	S#42	S#44
F	JE IgM Positive Control.	S#23	S#25	S#27	S#29	S#31	S#33	S#35	S#37	S#39	S#41	S#43
G	JE Negative Control.	S#2	S#4	S#6	S#8	S#10	S#12	S#14	S#16	S#18	S#20	S#22
H	JE Negative Control.	S#1	S#3	S#5	S#7	S#9	S#11	S#13	S#15	S#17	S#19	S#21

5. Cover the plate with Parafilm or similar plate cover just on the well opening surface, so the bottom of the plates is not covered.
Note: This is to make sure the temperature distribution is evenly spread out in all wells from bottom and sides; any extra Parafilm or similar plate cover can be cut off once the top is sealed to block evaporation.



6. Incubate the plate at **37 °C for 1 hour in an incubator.**
Note: Do not stack plates on top of each other. They should be spread out as a single layer. This is very important for even temperature distribution. Do not use CO₂ or other gases. Do not place plates in contact with any wet substances such as wet paper towels etc.



CORRECT METHOD

7. After the incubation, wash the plate 6 times with an automatic plate washer using 1x Wash buffer. Use 300 µL per well in each wash cycle.
8. Add **50 µL/well** of JERA into row A-D and 50 µL/well of NCA into row E-H by multi-channel pipettor. An exemplary application for JERA and NCA is shown below.

Example for JE Antigens Application												
	1	2	3	4	5	6	7	8	9	10	11	12
A	JERA	JERA	JERA	JERA	JERA	JERA	JERA	JERA	JERA	JERA	JERA	JERA
B	JERA	JERA	JERA	JERA	JERA	JERA	JERA	JERA	JERA	JERA	JERA	JERA
C	JERA	JERA	JERA	JERA	JERA	JERA	JERA	JERA	JERA	JERA	JERA	JERA
D	JERA	JERA	JERA	JERA	JERA	JERA	JERA	JERA	JERA	JERA	JERA	JERA
E	NCA	NCA	NCA	NCA	NCA	NCA	NCA	NCA	NCA	NCA	NCA	NCA
F	NCA	NCA	NCA	NCA	NCA	NCA	NCA	NCA	NCA	NCA	NCA	NCA
G	NCA	NCA	NCA	NCA	NCA	NCA	NCA	NCA	NCA	NCA	NCA	NCA
H	NCA	NCA	NCA	NCA	NCA	NCA	NCA	NCA	NCA	NCA	NCA	NCA

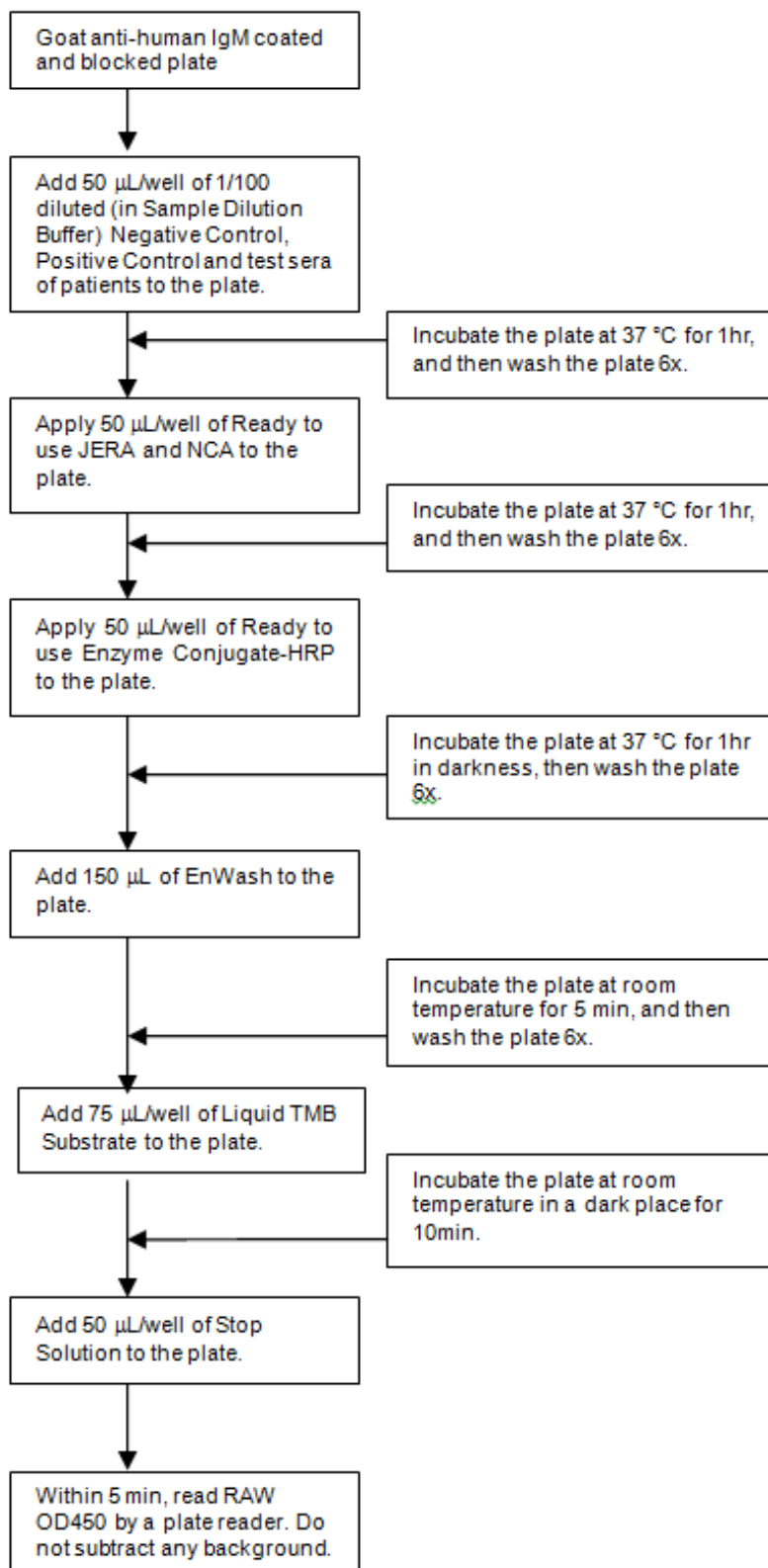
9. Cover the plate with Parafilm or similar plate cover just on the well opening surface, so the bottom of the plate is not covered (see step 5).
10. Incubate the plate at **37 °C for 1 hour in an incubator**.
11. After the incubation, wash the plate 6 times with an automatic plate washer using 1x Wash buffer. Use 300 µL per well in each wash cycle.
12. Add **50 µL/well** of ready to use Enzyme-HRP conjugate into all wells by multi-channel pipettor.
13. Cover the plate with Parafilm or similar plate cover just on the well opening surface, so the bottom of the plate should not be covered (see step 5).
14. Incubate the plate at **37 °C for 1 hour in an incubator in darkness**.
15. After the incubation, wash the plate 6 times with an automatic plate washer using 1x Wash buffer. Use 300 µL per well in each wash cycle.
16. Add **150 µL/well** of *EnWash* into all wells by multi-channel pipettor.
17. Incubate the plate at **room temperature for 5 minutes** without any cover on the plate.
18. After the incubation, wash the plate 6 times with an automatic plate washer using 1x Wash buffer. Use 300 µL per well in each wash cycle.
19. Add **75 µL/well** of Liquid TMB substrate into all wells by multi-channel pipettor.
20. Incubate the plate at **room temperature in a dark place (or container) for 10 minutes** without any cover on the plate.
21. After the incubation, add **50 µL/well** of Stop solution into all wells by multi-channel pipettor.
22. Within 5 minutes, read the RAW OD 450 value with a Microplate reader.

For optimal, accurate results, do not subtract the background or normalize for blank wells.

CSF application: CSF should be run using undiluted samples. If there is not enough volume to test, the CSF samples may be diluted 1:2, or higher using the Sample Dilution Buffer provided. However, one needs to optimize the proper dilution factor. The rest of the process is the same as described for serum.

Note: It is necessary to validate the CSF system in a laboratory before using unknown samples.

JE (Japanese Encephalitis) IgM Capture ELISA Procedure Flowchart:



8 QUALITY CONTROL

Each kit contains positive and negative controls to ensure assay performance.

The negative and positive controls are intended to monitor for substantial reagent failure. The positive control will not ensure precision at the assay cut-off. The test is invalid and must be repeated if the ISR values of either of the controls do not meet the specifications.

Acceptable Immune Status Ratio (ISR) values for these controls are found on the specification table below. If the test is invalid, patient results cannot be reported.

Quality control requirements must be performed in conformance with local, state, and/or federal regulations or accreditation requirements and your laboratory's standard Quality Control procedures. It is recommended that the user refer to CLSI C24 and 42 CFR 493.1256 for guidance on appropriate QC practices.

The results below are given strictly for guidance purposes only.

Applicable for raw spectrophotometric readings only. Do not subtract any background.

Calculation of the Negative Control:

Calculate the mean JE Negative Control values with JERA and with the Control antigen, then calculate the JERA/NCA ratio.

Example: JE Negative Control

	OD	
	JERA	NCA
No 1	0.188	0.129
No 2	0.192	0.125
Total	0.380	0.254

Averages (JERA) = $0.380 \div 2 = 0.190$

(NCA) = $0.254 \div 2 = 0.127$

Calculate the JERA/NCA ratio: $0.190 \div 0.127 = 1.50$

Any JE Negative Control JERA/NCA ratio greater than 2.8 indicates that the test procedure must be repeated.

Calculation of the Positive Control:

Calculate the mean JE IgM Positive Control values with JERA and with the NCA, then calculate the JERA/NCA ratio.

Example: JE IgM Positive Control

	OD	
	JERA	NCA
No 1	1.035	0.105
No 2	1.055	0.115
Total	2.090	0.220

Averages (JERA) = $2.090 \div 2 = 1.045$

(NCA) = $0.220 \div 2 = 0.110$

Calculate the JERA/NCA ratio: $1.045 \div 0.110 = 9.5$

Any JE IgM Positive Control JERA/NCA ratio less than 6.0 indicates that the test procedure must be repeated.

The results in the table below must be obtained in order that the results of the run may be reported. Non-fulfillment of these criteria is an indication of deterioration of reagents or an error in the test procedure and the assay must be repeated.

Factor (For Assay Verification)	Tolerance
Mean Negative Control OD in JERA	< 0.300
Mean Positive Control OD in JERA	> 0.600
Positive Control Immune Status Ratio (ISR)	> 6.000
Negative Control Immune Status Ratio (ISR)	< 2.800

9 CALCULATIONS FOR UNKNOWN SAMPLE ANALYSIS

Calculation of the Immune Status Ratio (ISR):

Calculate the average JERA and NCA OD_{450nm} values for each of the controls. For test samples, run in singlet, obtain the individual JERA and NCA values. Determine the Immune Status Ratio (ISR) values for the controls and all test sera by dividing the JERA OD_{450nm} /NCA OD_{450nm}.

The assay performance is deemed valid when the ISR for the positive control is greater than 6.0, and the ISR for the negative control is less than 2.8.

Selection of the Cut-off:

The cut-off was selected using values from a small set of field data and is an estimate only.

Interpretation of Results:

The table below shows how the results should be interpreted.

ISR	Results	Interpretation
< 4.0	Negative	No detectable IgM antibody by the ELISA test
4.0 - 6.0	Equivocal	Need confirmatory test
> 6.0	Positive	Indicates presence of detectable IgM antibody. Recommend supplemental confirmatory testing.

10 LIMITATIONS

- For in vitro diagnostic use only. Not for sale or distribution in the United States of America.
- Since this is an indirect screening method, the presence of false positive and negative results must be considered.
- All reactive samples must be evaluated by a confirmatory test.
- The reagents supplied in this kit are optimized to measure JERA reactive antibody levels in serum.
- Serological cross-reactivity across the flavivirus group is common. Certain sera from patients infected with Dengue, West Nile, and Saint Louis virus may give false positive results. Therefore any JE positive sera must be confirmed with other tests.
- In areas where JE and dengue are co-existent, JE positive samples should also be assayed for dengue reactivity. Samples with borderline JE positivity and medium to high dengue reactivity could be suspected for dengue infection and require further confirmatory assays.
- The assay performance characteristics have not been established for visual result determination.
- Results from immunosuppressed patients must be interpreted with caution.
- Assay results should be interpreted only in the context of other laboratory findings and the total clinical status of the patient.
- This kit has not been optimized for vaccine induced seroconversion studies.
- The use of JE (Japanese Encephalitis) IgM Capture ELISA kit for vaccine-induced seroconversion studies may lead to many “Equivocal” results.

11 PERFORMANCE CHARACTERISTICS

11.1 Sensitivity and Specificity Studies

The following specificity and sensitivity data of the JE (Japanese Encephalitis) IgM Capture ELISA kit were derived from two small studies. One was a comparison conducted by the CDC, while the second was a JE-infected human serum panel provided by CDC. For data analysis in these studies, an OD ratio of each sample was calculated (OD450 on JERA/OD450 of control at each dilution). A ratio >10.0 was considered positive for JE infection.

Note: Specificity panel includes normal and other disease sera, such as sera from patients with autoimmune diseases (ANA, RF, etc.; not including Dengue, WNV, and SLE sera). Limited studies with dengue sera showed cross-reactivity with some sera. One convalescent serum did not show any IgM reactivity.

		Positive	Convalescent	Negative	Total
JE IgM ELISA	+	31	0	0	31
	-	0	1	196	197
Total		31	1	196	228

Serological Sensitivity: 31/31, or 100%

Serological Specificity: 0/196, or 100%

11.2 Cross-reactivity Studies

The table below shows the results for the cross-reactivity study performed with the JE (Japanese Encephalitis) IgM Capture ELISA kit.

	Total specimens tested	Positive or Equivocal in JE IgM-ELISA
Normal (North American)	110	0
Rheumatoid Factor	8	0
Anti-nuclear Antibody	10	0
Cytomegalovirus	10	0
Epstein-Barr virus	15	0
Varicella-zoster virus	10	0
Hepatitis B virus	9	0
Hepatitis C virus	19	0
Malaria	5	0

11.3 Interference Study

Eight plasma samples containing high levels (860-5630 IU) of Rheumatoid factor gave negative results in the JE (Japanese Encephalitis) IgM Capture ELISA.


12 REFERENCES / LITERATURE

- Martin, D.A., Muth, D.A., Brown, T., Johnson, A.J., Karabatsos, R, Roehrig, J.T. 2000. Standardization of Immunoglobulin M Capture Enzyme-Linked Immunosorbent Assays for Routine Diagnosis of Arboviral Infections. *J. Clin. Microbiol.* 38(5):1823-1826.
- Cardosa MJ, Wang SM, Sum MS, Tio PH. Antibodies against prM protein distinguish between previous infection with dengue and Japanese encephalitis viruses. *BMC Microbiol.* 2002 May 5;2(1):9
- Pandey B, Yamamoto A, Morita K, Kurosawa Y, Rai S, Adhikari S, Kandel P, Kurane I. Serodiagnosis of Japanese encephalitis among Nepalese patients by the particle agglutination assay. *Epidemiol Infect.* 2003 Oct; 131(2):881-5.
- Thakare JP, Gore MM, Risbud AR, Banerjee K, Ghosh SN. Detection of virus specific IgG subclasses in Japanese encephalitis patients. *Indian J Med Res.* 1991 Sep; 93:271-6.
- Lowry PW, Truong DH, Hinh LD, Ladinsky JL, Karabatsos N, Cropp CB, Martin D, and Gubler DJ. Japanese encephalitis among hospitalized pediatric and adult patients with acute encephalitis syndrome in Hanoi, Vietnam 1995. *Am. J. Trop. Med. Hyg.* 1998; 58(3):324-329.
- Tsai TF. Factors in the changing epidemiology of Japanese encephalitis and West Nile fever. In: Saluzzo JF ed., *Factors in the Emergence of Arboviral Diseases.* Amsterdam: Elsevier, 1997; 179-189.
- Tsai TF. Japanese encephalitis. In: Feigin RD and Cherry JD (eds.), *Textbook of Pediatric Infectious Diseases*, 4th edition, Philadelphia: W.B. Saunders, 1997; 1993-2001.
- Rosen L. The natural history of Japanese encephalitis. *Annu. Rev. Microbiol.*, 1986; 40:395-414.

13 TROUBLESHOOTING

Problem	Possible Cause	Possible Resolution
High Absorbances for JERA/NCA	Incorrect component used	Do not combine controls or reagents between different lots of the ELISA kits.
	Samples incorrectly diluted	Sera should be diluted 1:100 in kit's sample dilution buffer.
	Cross contamination of wells	A new tip must be used for every test sera or control.
	Incomplete washing of wells	Wells must be completely filled and emptied 6 times during each wash cycle.
	Incubation times too long	Incubation times vary; please refer to the "Test Procedure" section for correct times.
	Conjugate contamination with TMB	It is recommended to use a new pipette/ pipette tip each time to dispense conjugate and TMB.
	Incorrect wavelength filter	The optical density readings must be read with only a 450nm filter. There must not be any background subtraction.
Low Absorbances for JERA/NCA	Samples incorrectly diluted	Sera should be diluted 1:100 in kit's sample dilution buffer.
	Kit expiration date and storage	Verify that the kit is not expired and that components were properly stored
	Incorrect component used	Do not combine controls or reagents between different lots of the ELISA kits.
	Component temperatures	All kit components must be equilibrated at room temperature for optimal performance.
	Incubation times too short	Incubation times vary; please refer to the "Test Procedure" section for correct times.
	Incubation temperature too low or high	Verify that incubators are calibrated with NIST-traceable standard thermometers and that the temperatures are monitored.
	JERA/NCA contamination	The antigens are very susceptible to contamination. It is recommended to use a new pipet/pipette tip each time to dispense antigens. Keep the lid on the antigens unless in use. When possible, dispense antigens in a clean laminar flow hood or biological safety cabinet.
	Conjugate contamination	The conjugate is very susceptible to contamination. It is recommended to use a new pipet/pipette tip each time to dispense conjugate. Keep the lid on the conjugate unless in use. When possible, dispense conjugate in a clean laminar flow hood or biological safety cabinet.
	TMB contamination with Stop solution	It is recommended to use a new pipet/ pipette tip each time to dispense TMB and stop solution.
	Use of reagents in the wrong sequence, or omission of step(s)	Check the "Test Procedure" section and component labels prior to use.
Incorrect wavelength filter	The optical density readings must be read with only a 450nm filter. There must not be any background subtraction.	

SYMBOLS USED

Symbol	English	Deutsch	Français	Español	Italiano
	Consult instructions for use	Gebrauchsanweisung beachten	Consulter les instructions d'utilisation	Consulte las instrucciones de uso	Consultare le istruzioni per l'uso
	European Conformity	CE-Konformitätskennzeichnung	Conformité aux normes européennes	Conformidad europea	Conformità europea
	In vitro diagnostic device	In-vitro-Diagnostikum	Usage Diagnostic in vitro	Para uso Diagnóstico in vitro	Per uso Diagnostica in vitro
	For research use only	Nur für Forschungszwecke	Seulement dans le cadre de recherches	Sólo para uso en investigación	Solo a scopo di ricerca
	Catalogue number	Katalog-Nr.	Numéro de catalogue	Número de catálogo	Numero di Catalogo
	Lot. No. / Batch code	Chargen-Nr.	Numéro de lot	Número de lote	Numero di lotto
	Contains sufficient for <n> tests/	Ausreichend für "n" Ansätze	Contenu suffisant pour "n" tests	Contenido suficiente para <n> ensayos	Contenuto sufficiente per "n" saggi
	Storage Temperature	Lagerungstemperatur	Température de conservation	Temperatura de conservación	Temperatura di conservazione
	Expiration Date	Mindesthaltbarkeitsdatum	Date limite d'utilisation	Fecha de caducidad	Data di scadenza
	Manufacturer	Hersteller	Fabricant	Fabricante	Fabbricante
Distributed by	Distributor	Vertreiber	Distributeur	Distribuidor	Distributore
Content	Content	Inhalt	Conditionnement	Contenido	Contenuto
Volume/No.	Volume / No.	Volumen/Anzahl	Volume/Quantité	Volumen/Número	Volume/Quantità

(31-Jul-2019_ia)